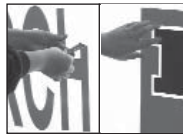




### Unbreakable Sign Face

Faces are formed from solar grade co-extruded polycarbonate to resist damage from impact and yellowing due to sunlight.



### Second Surface Decoration

3M™ high performance vinyl is applied second surface (inside the face) protected both from vandals and the elements.

### Fiberglass Decorative Trim

Gives a smooth, three-dimensional finished look.



### Graffiti-Resistant Paint

Paint is baked on at 180°; graffiti can easily be wiped away.



### Locking Vandal Cover

A keyed locking vandal cover system keeps vandals from getting access to the message.



### Easy Copy Changes

Self-supporting mechanical props, support the vandal cover opening to 90° for ease of message changes.

### Planked Face

Planking in the face adds rigidity to keep the face from sagging and allows air, water and debris to flow through.



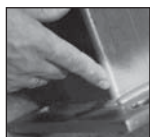
### Riveted Copy Track

Rivets hold stronger than glue and in combination with the planking allow for easy cleaning.



### Strong Structure

Engineered for 120-150 mph windloads to accommodate zoning regulations.



### Sand Blasted Weldments

Cleansed with sand, acid, detergent and water to completely remove contaminants and ensure the best primer and paint adhesion.

